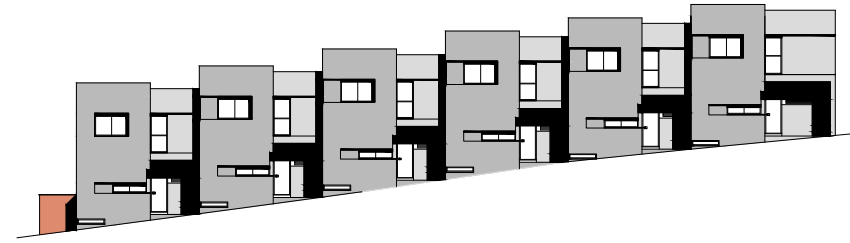


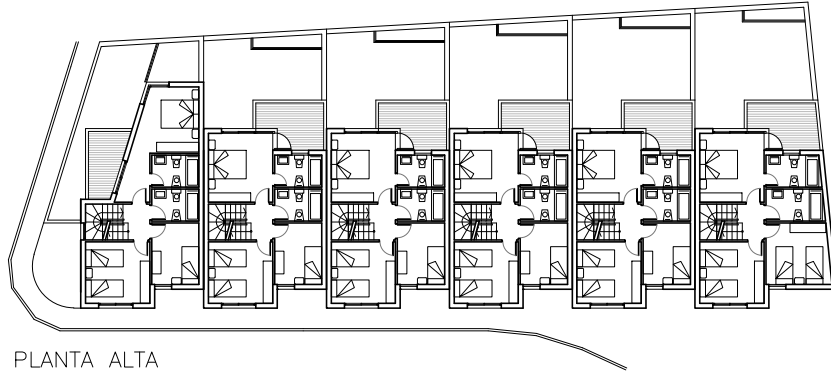
PARCELA URBANA
AVENIDA GARCIA LORCA N19
CENES DE LA VEGA
SUPERFICIE: 561m²
CAPACIDAD: 6 VIVIENDAS ADOSADAS



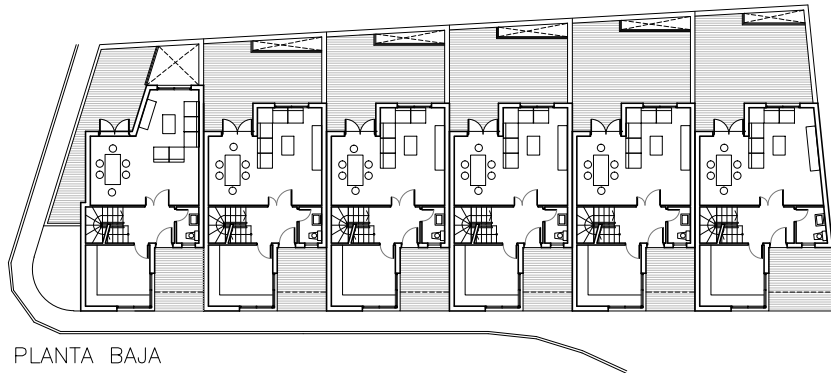
PARCELA URBANA - AVENIDA GARCIA LORCA N19
 CENES DE LA VEGA



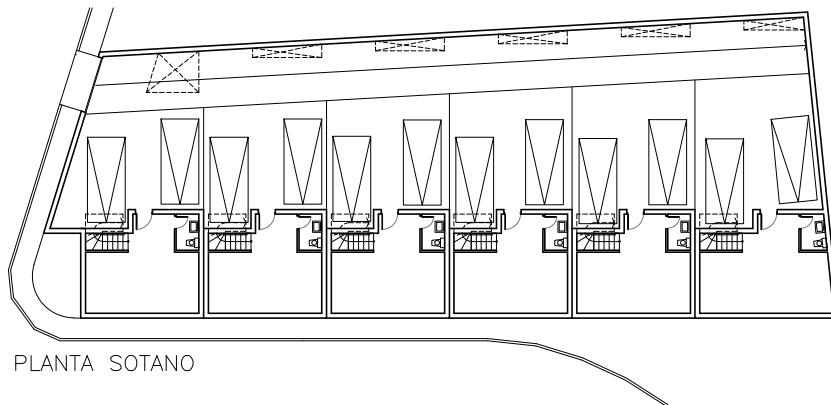
ALZADO



PLANTA ALTA



PLANTA BAJA



PLANTA SOTANO

PARCELA URBANA - AVENIDA GARCIA LORCA N19
CENES DE LA VEGA